

ATTACHMENTS GENERAL CATALOG



TOOLS

That Make People Move

TOTAL SOLUTION PROVIDER CREATING MORE VALUE FOR FUTURE GENERATION!

Hyundai Everdigm's product quality, engineering and service network have been endorsed over 80 countries around the world.

Hyundai Everdigm's attachments use special materials and fem structure engineering. So it guarantees superior productivity, safety and durability. International dealer network system provides responds to all customer cares.

WORLDWIDE DEALER NETWORK

Hyundai Everdigm continues to grow in strength around the world, fueled by market success and innovation, and aided by our global network about 120 overseas dealers in 70 countries. with a full product range, which is manufactured, serviced and supported by everdigm to all over the globe, we've got the right machine and the right solution for all your jobs.





Tools That Make People Move

With the goal to be a total solution provider for construction equipment, Hyundai Everdigm attachments have grown in to most reliable attachment manufacturer in South Korea with worldwide distribution partners in 70 countries. Meantime, Hyundai Everdigm has continuously verified the excellent quality by achieving ISO9001, ISO14001, CE and AEM Tool Energy Rating which realized by high qualified R&D team, efficiency-integrated manufacturing system. Also goal-oriented professional staffs with full ranged product line of hydraulic breaker, multiprocessor, pulverizer, compactor, multipurpose grab, quick coupler and other attachments. In these matters, Hyundai Everdigm attachments fulfill the maximum productivity and durability for construction and demolition job site.

Consider AEM's tool energy rating

Why develop the tool energy rating?

The AEM tool energy rating is accepted by hydraulic breaker manufacturers from Finland, France, Germany, Italy, Japan, South Korea, Sweden and the United States. Everdigm Corp. has been accredited to self certify the tool, Energy rating obtained through test processes complying with AEM measuring Guid

High impact energy by AEM tool energy rating

- Better productivity by AEM certified tool energy rating
- Giving customers more reliable guide for selection

Designing by Solid Edge program

Centralized lubricating system

- Enable to utilize centralized auto grease system

Fewer components

- About 30-90% of parts compared to competitors.
- Easy maintenance
- Dealers need fewer spare parts in inventory
- Easy to rebuild

High pressure accumulator (EHB17 and larger model)

- Eliminates pressure fluctuation
- Increases impact power





MARKETING AND PROMOTION

Promotion Provider for you

Our products are not only provided at job sites around the world. You can also experience the variable power of Hyundai Everdigm's special products at international exhibitions, and periodical advertisement on international magazines. Hyundai Everdigm's strong brand is continually developing new technologies.

Customer focus is our first priority

Our well-organized marketing team helps promoting success of all distributors.

Visual materials

Well-designed visual materials is arranged by our specialist staffs and provides our partners.

Partnership that you can depend on

We will help you find solutions for your special marketing project requirements.



PARTS, SERVICE, AND TRAINING

After-sales services – a perfect concept keeps going for you

The delivery of machine marks the beginning of a long-standing service partnership. Our customer satisfaction team of Hyundai Everdigm service experts is always there to help with any questions concerning the machine the product and its operation. Ensuring your long-term success with machines from Hyundai Everdigm is a matter of particular concern to us. Qualified training of machine operators and the specialized knowledge required for servicing and maintenance are necessary when it comes to ensuring optimum, long-term utilization of our products. Hyundai Everdigm offers the opportunity of training your expert personnel through in-depth training courses.

Hyundai Everdigm Original Parts

High-quality spare parts and wearing parts for your machines directly from the manufacturers.

Practical, consistent and clever information systems

Do everything with Hyundai Everdigm product portfolio

Experienced specialists from Hyundai Everdigm

Offer comprehensive applications consulting in the project planning, on-going and completion steps

HYDRAULIC BREAKER

Prime series are silenced type breakers that are developed for environment and human health according to international trend of noise restriction. By equipped a hard boots of reinforced rock dragger and bracket, prime series provides much innovative durability with maximum power than ever. The benefits of these series are dual speed control system, hard boots(EHB13 and larger model), anti-blank blow system, auto-stop & auto-start function and single high pressure accumulator(EHB17 and larger model).

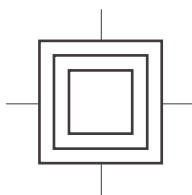


The new design and color of power cell has been adapted for this standard series to improve protection of power cell in non-box enclosure breaker. Round open and long side brackets offer not only access for easy maintenance, but also better protection of power cell.



Hyundai Everdig Hydraulic Breaker Series

Maximizing
productivity
and reliability



Minimizing
maintenance
and downtime

Right tools for all carriers and applications

Skidsteer series

Skidsteer series are developed for skidsteer loader to meet the market requirement of higher impact energy and optimal performance

Backhoe series

Backhoe series are developed for backhoe loader to meet the required design for transportation

SL
NL



HOUSING NA
-OPEN TYPE-

MULTIPROCESSOR

Multiprocessor for professional demolition Hyundai Everdigm's EHC series of multiprocessors feature is "interchangeable jaw set", mounted on a single base unit but it provides the efficiency of six tools in one.



Unlimited 360 degrees Hydraulic rotation
with heavy-duty swing gear



Speed up valve
high jaw opening & closing speed



Customized tooth type
Welding type or replaceable type can be chosen



One pin type jaw mechanism
To enhanced shearing force and working & maintenance efficiency.



Fully reversible rectangular blades
for lower maintenance cost



User friendly blade clearance
adjustment by using one set of adjustable nut

Crushing Jaw set

- For the primary demolition operations
- Crushing down the main structure of a building

Demolition Jaw set

- Specially designed and engineered for mixed concrete and steel applications
- Combining the advantages of shear jaw set and concrete jaw set.
- Processing heavily reinforced concrete structures and concrete encased I-beam steel barrels without jaw change

Pulverizing Jaw set

- For the secondary demolition operations.
- Starting to process the demolished materials(ex. separating bar from concrete)

Universal Jaw set

- Universal Jaw set can be used for concrete crushing and cutting steel together.
- Amount of work will be shortened by cutting materials as a fixed size

Mobile shearing Jaw set

- More advanced shearing jaw type which replaceable tip blade is used.
- Wide jaw opening and blades make cutting capacity improved.



Crushing



Demolition



Pulverizing



Shearing



Universal



Mobile shearing

PULVERIZER - FIXED TYPE

To produce with increased power and durability by state-of-the-art technology, Hyundai Everdigm's Pulverizers have been designed for both primary demolition work, secondary concrete reduction and material sorting.



Wider jaw

- With its wider jaw, exceptional closing force and short cycle times, EHP pulverizer provides excellent productivity in concrete reduction and reinforced steel separation.

Integrated speed up valve with cylinder

- Maximum job performance efficiency

Replaceable tooth system

- Fast and effortless replacement of tooth allowing high productivity

Durability

- Increased durability has been achieved with the use of abrasive-resistant materials
- Powerful and durable attachments produced by advanced design and high quality production are able to handle the toughest jobs.



PULVERIZER - ROTATABLE TYPE



Wide jaw opening
For a large demolition work surface



Hardened tooth
Made of special material for enhanced durability



Fully reversible and rectangular blades



Hydraulic 360 degrees rotation unit
Allowing fast and targeted positioning to materials



Integrated speed up valve
Offering huge space for easy maintenance



Trunnion type cylinder
For maximum breaking force throughout jaw closing and opening motion

Wider jaw

- With its wider jaw, exceptional closing force and short cycle times, EHP pulverizer provides excellent productivity in concrete reduction and reinforced steel separation.

Integrated speed up valve with cylinder

- Maximum job performance efficiency

Replaceable tooth system

- Fast and effortless replacement of tooth allowing high productivity

Durability

- Increased durability has been achieved with the use of abrasive-resistant materials
- Powerful and durable attachments produced by advanced design and high quality production are able to handle the toughest jobs.

GRAB - RIB TYPE

* EPG grabs are designed for selective demolition, sorting of recycle material and loading of various materials



Reinforced body & jaw

- Body and jaw are reinforced to prevent from deformation against external force (from EPG14 and larger model)
- Mainframe is tightly protected from crushing debris. Thus inner parts remain intact in any condition.

Stopper

- Reinforced stopper is located on the body and it reduces the cylinder when grabs are opened. (from EPG14 and larger)

Using high quality material

- HARDOX plates are adapted on the jaw and bottom plate of body where the wear resistance and durability are required.

Easy maintenance and repairing

- New EPG series provide easy maintenance and repairing.

Hydraulic 360 degrees rotation unit

- The continuous 360 degrees hydraulic rotation gets stronger with two rotation motors.
- This can make sorting job much easier with strong jaw.

2 cylinders are applied

- 2 cylinders are applied for equal distributed load & better productivity of jaws (from EPG14 and larger model)

Improved Cutting edge plate

- Separable cutting edge plate for easy replacement
- Hardened bolts and stopper block are applied.



COMPACTOR



Oil bath type
Compacted weight chamber is filled with gear oil. Therefore, old oil needs to be eliminated periodically. (Replacement interval is about 1 year)



Durable frame design
Durability of main body is increased by flat and solid frame



Stopper
It limits excessive pressing force from excavator



Wider cushion rubber for EPC05
It increases the durability from vibration.

Easy and versatile mounting

- Direct Mount Frame: The pin-on type frame is designed to accept a variety of slip-fit bushings and pins, resulting in versatile installation on any carrier that does not require OEM's pin-to-pin distance.

Single hose block

- All hoses are routed within the frame and connected to a mono hose block located on the back. It protects the hoses from easy damage

Cushion rubber

- Specially designed cushion rubbers protect machine and operator from vibrations

Heavy duty gear motor

- Heavy duty and high efficiency gear motor with splined shaft and high pressure motor seals prevent easy damage caused by pressure shock during startup and shutdown

Self-aligning bearing

- Self-aligning double row spherical roller bearing provides a long service life to rotating components

Easy maintenance

- All grease fittings are located for easy access

Cross-check valve as standard

- Built-in cross check valve within motor protects the motor and bearing from damage caused by abrupt shutdown of hydraulic flow. And it also eliminates the need for a case drain

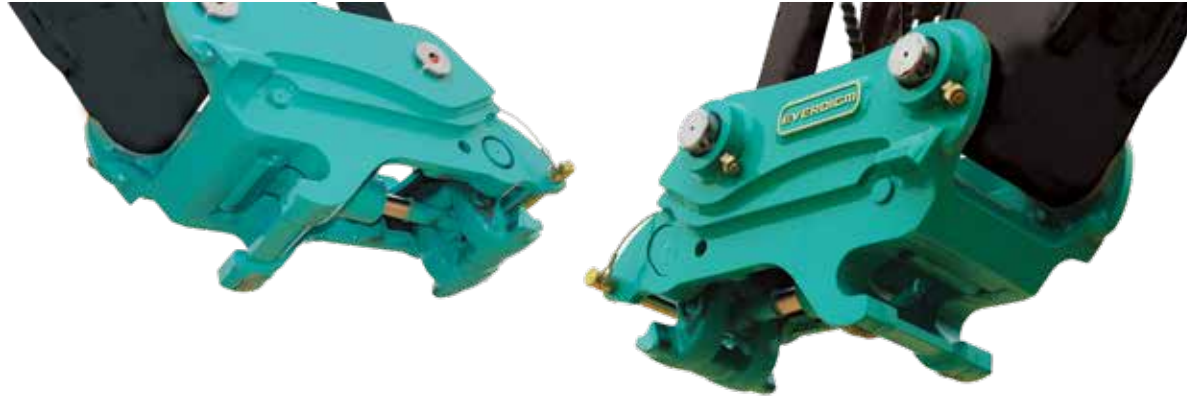
Valve pack as standard

- Flow control valve(Priority flow divider) regulates hydraulic in - flow to the motor and prevents it from over-speeding. Thus, the compactor can be installed on carrier without extra flow control valve on its auxiliary piping.

Pressure relief valve is also incorporated in the valve pack and it prevents system from over pressure. Attachments such as breakers which works at a relatively higher pressure than compactor can be easily switched to the compactor on the same auxiliary piping without re-setting of the carrier's relief valve pressure.

By-pass check valve, flow control valve, and pressure relief valve are packed within a single hose block.

QUICK COUPLER RHQ / EQD



Safety

More advanced safety which is enabled by innovative safety devices

- Dual Auto Locking system which ensures that the attachment is retained in the working position in the event of loss of hydraulic pressure.
- Built-in check valve inside of cylinder
- Complied with forthcoming ISO13031.(Earth-moving machinery)

Durability

High Strength with wear resistance material and high pressurized cylinder provides excellent durability.

Aesthetics

Well-balanced and stylish design to harmonize with all excavators and attachments.

Convenience

- EQD series provide the best convenience with full-automatic locking devices which are connected with quick coupler Lock / Release operation.
- Locking condition of the safety locking system is visible from a cabin.

Versatility

- Wide application with wide pin-to-pin distance
- Available to cover carrier weights from 2.5 up to 75 tons class excavator
- Piping kits are available to supply.

Optimization

Light weight, fast operating – 10 years know-how and latest 3D design & engineering gives the applicable quick coupler you have waited for.



HOUSING BA Breaker

-SILENCE TYPE-

SPECIFICATION			EHB 008	EHB 01	EHB 02	EHB 03	EHB 04	EHB 05	EHB 06	EHB 10	EHB 13	EHB 17	EHB 20	EHB 25	EHB 30	EHB 40	EHB 50	EHB 70	EHB 100
Working Weight ¹⁾		kg	80	116	116	144	243	314	468	552	1,017	1,341	1,502	1,799	2,461	3,433	4,119	6,484	10,070
Required Oil Flow		lpm	12~30	15~25	20~35	25~35	30~50	35~65	45~90	60~110	80~140	110~170	100~150	130~180	170~240	200~280	230~330	320~420	410~530
Operating Pressure			100~130	100~130	100~130	100~130	110~140	130~170	130~170	140~180	140~180	160~180	160~180	160~180	165~185	165~185	165~185	165~185	165~185
Blow Frequency	Low speed Mode	bpm									380~700	350~600	340~550	330~500	310~490	330~450	250~370	280~370	260~340
	High speed Mode	bpm	550~1,300	700~1,200	700~1,200	550~1,000	550~1,000	550~1,000	520~1,000	500~1,000	550~850	500~750	440~700	430~650	400~680	420~600	350~500	370~480	360~470
Impact Energy ²⁾	Low speed mode	joule									2,500	2,800	3,500	4,300	6,100	7,600	10,400	13,000	17,000
	High speed mode	joule	110	180	200	300	450	700	1,000	1,350	2,150	2,200	2,800	3,200	4,200	6,000	7,900	10,000	14,000
Tool shank diameter		mm	42	45	45	50	58	68	80	93	105	117	125	135	150	165	180	205	245
Applicable carrier weighth		Tonne	0.6~1.5	0.7~2.5	1.0~4.0	1.5~4.5	2.5~6.0	3.5~8.0	5~11	7~15	12~20	14~24	16~25	20~30	26~35	32~45	40~70	60~110	85~140

1) Total weight including standard tool, standard mounting adapter and spacers but excluding hydraulic hoses, fittings and mounting pins.

2) The length measured from the tool tip of the standard tool to the top of the breaker including mounting adapter.

*Materials and specifications are subject to change without prior notice

3) Including standard mounting adapter, fasteners and spacers (for BA version).

HOUSING NA Breaker

-OPEN TYPE-

SPECIFICATION			EHB008	EHB01	EHB02	EHB03	EHB04	EHB05	EHB06	EHB10	EHB04NS	EHB05NS	EHB05NL	EHB06NL
Working Weight ¹⁾		kg	79	116	116	142	211	330	455	549	255	263	312	395
Required Oil Flow		lpm	10 ~ 30	15 ~ 25	20 ~ 35	25 ~35	30 - 50	35 ~ 65	45 ~ 90	60 ~ 110	50 ~ 75	35 ~ 65	35 ~ 65	45 ~ 90
Operating Pressure			100 ~ 130	100 ~ 130	100 ~ 130	100 ~ 130	110 ~ 140	130 ~ 170	130 ~ 170	140 ~ 180	110 ~ 140	130 ~ 170	130 ~170	130 ~ 170
Blow Frequency	Low speed Mode	bpm												
	High speed Mode	bpm	500 ~ 1,300	700 ~ 1,200	700 ~ 1,200	550 ~ 1,000	550 ~ 1,000	550 ~ 1,000	520 ~ 1,000	500 ~ 1,000	550 ~1,000	550 ~ 1,000	550 ~ 1,000	520 ~ 1,000
Impact Energy ²⁾	Low speed mode	joule												
	High speed mode	joule	110	180	200	300	450	700	1,000	1,350	450	700	700	1,000
Tool Shank Diameter		mm	42	45	45	50	58	68	80	93	58	68	68	80
Applicable Carrier Weight			0.6 ~ 1.5	0.7 ~ 2.5	1.0 ~ 4.0	1.5 ~ 4.5	2.5 ~ 6.0	3.5 ~ 8.0	5 ~ 11	7 ~ 15	2.5 ~ 6.0	3.5 ~ 8.0	3.5 ~ 8.0	5.0 ~ 11.0

1) Total weight including standard tool, standard mounting adapter and spacers but excluding hydraulic hoses, fittings and mounting pins.

2) The length measured from the tool tip of the standard tool to the top of the breaker including mounting adapter.

*Materials and specifications are subject to change without prior notice

PULVERIZER - FIXED TYPE

SPECIFICATION		EHP16	EHP19	EHP22	EHP32
Working weight ¹⁾	kg	952	1,310	2,030	2,503
Overall length ²⁾	mm	1,656	1,985	2,206	2,388
Jaw width(Fixed /Moving jaw)	mm	384/330	438/350	470/372	532/386
Max. jaw opening	mm	680	732	889	1,061
Max. Operating pressure	bar	350	350	350	350
Crushing force(tip)	tonnes	56	59	70	85
Cutter blade length	mm	240	240	360	360
Required oil flow	lpm	100 ~ 180	150 ~ 250	150 ~ 250	200 ~ 300
Applicable carrier weight	tonnes	13 ~ 20	16 ~ 25	20 ~ 28	28 ~ 36
standard features					
-speed up valve		Not available	Standard	Standard	Standard
-Bolting tooth		Not available	Not available	Standard	Standard

1) Total weight including speed up and hydraulic rotation , but excluding mounting adaptor, hydraulic hoses, fitting and mounting pis

2)the maximum length excluding mounting adapter with Jaw full closed(or opened)

* Materials and specifications are subject to change without prior notice

PULVERIZER - ROTATABLE TYPE

SPECIFICATION		EHP16 R	EHP20 R	EHP25 R	EHP35 R
Working weight ¹⁾	kg	1,250	1,817	2,517	3,017
Overall length ²⁾	mm	1,840	2,134	2,474	2,684
Jaw width(Fixed /Moving jaw)	mm	384/298	438/350	470/372	510/370
Max. jaw opening	mm	720	765	925	1,064
Max. Operating pressure	bar	350	350	350	350
Crushing force(tip)	tonnes	56	61	73	85
Cutter blade length	mm	240	240	360	360
Required oil flow	lpm	100 ~ 180	150 ~ 250	150 ~ 250	200 ~ 300
Applicable carrier weight	tonnes	13 ~ 16	17 ~ 25	20 ~ 27	28 ~ 36
standard features					
-speed up valve		Not available	Standard	Standard	Standard
-Bolting tooth		Not available	Not available	Standard	Standard

1) Total weight including speed up and hydraulic rotation , but excluding mounting adaptor, hydraulic hoses, fitting and mounting pis

2)the maximum length excluding mounting adapter with Jaw full closed(or opened)

* Materials and specifications are subject to change without prior notice

MULTIPROCESSOR

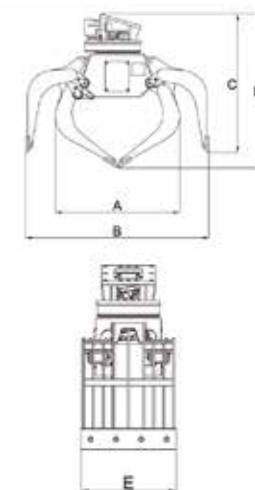
SPECIFICATION		EHC08		EHC13						EHC22						EHC32						EHC40					
Jaw type		MS	D	C	D	P	S	MS	U	C	D	P	S	U	MS	C	D	P	S	U	S	P	C	MS	D	N	
Working weight ¹⁾	kg	660	704	1,231	1,330	1,351	1,256	1,330	1,350	2,166	2,126	2,233	2,034	2,350	2,040	3,032	3,012	3,078	2,947	3,300	4,575	4,781	4,694	4,593	4,635	4,465	
Overall length ²⁾	mm	1,459	1,570	1,940	1,945	1,972	1,890	1,870	2,055	2,326	2,291	2,342	2,175	2,273	2,141	2,533	2,565	2,563	2,553	2,692	2,968	2,971	2,807	2,937	3,063	2,536	
Overall width	mm	773	1,033	1,200	1,187	1,157	989	989	1,102	1,438	1,368	1,508	1,083	1,189	1,083	1,684	1,560	1,643	1,348	1,486	1,612	1,895	1,970	1,612	1,879	1,823	
Max Jaw opening	mm	278	537	643	629	647	360	412	435	903	797	893	503	611	523	1,119	983	1,008	573	748	676	1,184	1,274	707	1,209	322	
Cutter blade length	mm	259	200	214	214	219	319	446	400	237	355	237	348	450	489	240	461	240	566	600	631	264	264	775	507	517	
Required oil flow	lpm	80 ~ 100		100 ~ 180						150 ~ 250						200 ~ 300						280 ~ 360 1 5 0 ~ 250					
Max. operating pressure	bar	300		350						350						350						350					
Crushing force (tip)	tonnes	42	30	62	62	64	65	63	61	74	77	70	88	81	87	104	110	113	114	110	178	166	159	173	158	205	
Applicable carrier weight	tones	7~ 10		14 ~ 19						20 ~ 28						28 ~ 36						36 ~ 47					
Standard feature																											
-Hyd.slewing motor		STANDARD		STANDARD						STANDARD						STANDARD						STANDARD					
-Speed up valve		Not available		STANDARD						STANDARD						STANDARD						STANDARD					

1) Total weight including speed-up and hydraulic rotation, but excluding mounting adapter, hydraulic hoses, fitting and mounting pins.

2) The maximum length excluding mountign adapter with jaw full closed(or opened)
* Materials and specifications are subject to change without prior notice.

GRAB - RIB TYPE

SPECIFICATION		EPG05A	EPG08A	EPG14	EPG20	EPG30
Number of Cylinder		1 EA	1EA	2EA	2EA	2EA
Carrier weight	Tonnes	4 ~ 8	7 ~ 10	11 ~ 16	18 ~ 25	25 ~ 38
Weight(without adaptor)	kg	385	530	1,086	1,494	2,370
Max closing force	Tonnes	2.2	3	6.1	7.3	8.6
Oil flow rate	lpm	15 ~ 40	20 ~ 60	40 ~ 80	60 ~ 120	80 ~ 160
Pressure	bar	300	300	350	350	350
Capacity	liter	150	250	430	620	995
A	mm	896	1,058	1,202	1,393	1,531
B	mm	1,310	1,551	1,748	2,050	2,285
C	mm	1,163	1,336	1,417	1,573	1,742
D	mm	1,092	1,232	1,325	1,459	1,599
E	mm	560	650	900	1,000	1,250



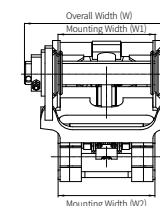
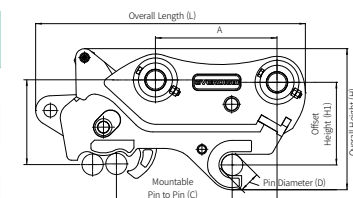
COMPACTOR

SPECIFICATION		EPC05 NARROW TYPE	EPC05 GENERAL TYPE	EPC10	EPC15	EPC20	EPC30
		(Standard)	(Option)				
Impulse force	tonnes	2.1	2.1	4	6.4	11.2	17.3
weight ¹⁾							
Adapter mount type	kg	260	280	430	689	1,094	1,502
Direct mount type	kg	264	344				
Height(H)							
Adapter mount type	mm	650	675	640	750	840	943
Direct mount type	mm	695	720				
Width(W)	mm	320	500	610	740	860	1,000
Base plate(W x L)							
Dimension	mm	320 X 745	500 X 800	610 X 900	740 X 1,050	860 X 1,200	1,000 X 1,300
Compaction area	m2	0.24	0.4	0.55	0.78	1.03	1.3
Oil flow required	lpm	45 ~ 65	45 ~ 65	50 ~ 120	80 ~ 170	110 ~ 200	160 ~ 250
Max. cycle per minute	rpm	2,100	2,100	2,000	2,000	2,000	2,000
Operating pressure							
Free load	bar	30 ~ 50	30 ~ 50	30 ~ 50	30 ~ 50	30 ~ 50	30 ~ 50
with load	bar	100 ~ 220	100 ~ 200	100 ~ 138	100 ~ 138	100 ~ 138	100 ~ 138
Applicable carrier weight	Tonnes	4 ~ 6	4 ~ 6	6 ~ 10	11 ~ 16	17 ~ 25	26 ~ 40

1) Including standard mounting adaptor, excluding hydraulic hoses, fitting and mounting pins

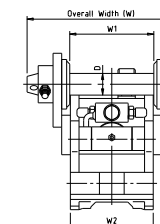
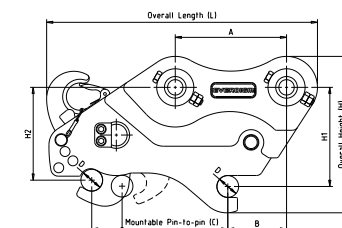
QUICK COUPLER EQD

SPECIFICATION		EQD03	EQD04	EQD05	EQD08	EQD14	EQD17	EQD22	EQD24	EQD30	EQD33	EQD45	EQD70
Overall Length(L)	mm	548	485 ~ 562	597 ~ 731	666 ~ 777	768 ~ 884	925 ~ 963	938 ~ 1,067	1,144 ~ 1,166	1,142 ~ 1,180	1,222 ~ 1,232	1,242 ~ 1,294	1,340 ~ 1,389
Overall Height(H)	mm	277	283 ~ 291	321 ~ 344	371 ~ 408	406 ~ 435	475 ~ 480	514 ~ 540	599	585 ~ 605	619 ~ 647	652 ~ 666	741 ~ 763
Overall Width(W)	mm	229	239 ~ 248	258 ~ 296	307 ~ 354	393 ~ 418	457 ~ 472	498 ~ 522	598 ~ 606	628 ~ 634	646 ~ 676	697 ~ 725	775
Weight	kg	46	47 ~ 51	74 ~ 87	103 ~ 120	170 ~ 206	275 ~ 280	349 ~ 390	532 ~ 547	551 ~ 580	665 ~ 731	740 ~ 892	1,098 ~ 1,128
Mounting width(W1)	mm	122	135 ~ 141	145 ~ 173	171 ~ 216	219 ~ 270	290 ~ 307	307 ~ 350	381	395 ~ 411	365 ~ 480	430 ~ 471	482 ~ 512
Mounting width(W2)	mm	122	134 ~ 139	144 ~ 164	169 ~ 216	218 ~ 274	289 ~ 304	298 ~ 332	321 ~ 380	321 ~ 410	365 ~ 440	396 ~ 470	462 ~ 510
Mountable pin to pin (C)	mm	167 ~ 220	167 ~ 260	217 ~ 310	270 ~ 380	355 ~ 432	385 ~ 464	427 ~ 525	455 ~ 591	455 ~ 591	535 ~ 631	550 ~ 640	572 ~ 689
Pin diameter (D)	mm	35	40	43 ~ 45	50 ~ 60	65	70	80	90	90	100, 110	100, 110	120
Offset Height(H1)	mm	160	160 ~ 170	164 ~ 205	205 ~ 230	254 ~ 264	280	289 ~ 324	340	340 ~ 350	370 ~ 390	380 ~ 400	450
Operation pressure	bar	120 ~ 350	120 ~ 350	120 ~ 350	120 ~ 350	120 ~ 350	120 ~ 350	120 ~ 350	120 ~ 350	120 ~ 350	120 ~ 350	120 ~ 350	120 ~ 350
Oil flow	lpm	10 ~ 20	10 ~ 20	10 ~ 20	10 ~ 20	10 ~ 20	10 ~ 20	10 ~ 20	10 ~ 20	10 ~ 20	10 ~ 20	10 ~ 20	10 ~ 20
Applicable excavator	tonnes	2.5 ~ 3.5	3.5 ~ 4.5	4.5 ~ 7	7 ~ 12	12 ~ 16	16 ~ 18	18 ~ 23	23 ~ 26	26 ~ 32	32 ~ 38	43 ~ 52	65 ~ 75



QUICK COUPLER RHQ

SPECIFICATION		RHQ701	RHQ702	RHQ703	RHQ704	RHQ705	RHQ708	RHQ713	RHQ718	RHQ720	RHQ722	RHQ730	RHQ733	RHQ745P
Overall length(L)	mm	331 ~ 348	322 ~ 436	446 ~ 511	451 ~ 524	547 ~ 625	616 ~ 686	832 ~ 883	972 ~ 999	951 ~ 999	903 ~ 1,036	1,100 ~ 1,178	1,083 ~ 1,209	1,276 ~ 1,321
Overall Height(H)	mm	222 ~ 230	220 ~ 257	243 ~ 278	254 ~ 306	289 ~ 343	314 ~ 358	385 ~ 428	477 ~ 482	477 ~ 482	465 ~ 509	547 ~ 576	551 ~ 602	699 ~ 705
Overall Width(W)	mm	218	208 ~ 236	225 ~ 249	228 ~ 248	274 ~ 293	307 ~ 332	402 ~ 435	479 ~ 484	479 ~ 508	478 ~ 531	603 ~ 635	635 ~ 666	709 ~ 726
Weight	kg	20 ~ 22	23 ~ 32	36 ~ 42	42 ~ 47	65 ~ 73	82 ~ 101	160 ~ 187	255	256	305 ~ 320	559 ~ 598	628 ~ 679	863 ~ 991
Mounting width(W1)	mm	90 ~ 107	96 ~ 134	122 ~ 146	125 ~ 141	145 ~ 173	171 ~ 202	260 ~ 281	305 ~ 308	305 ~ 332	306 ~ 356	381 ~ 411	409 ~ 441	431 ~ 471
Mounting width(W2)	mm	96 ~ 105	95 ~ 132	122 ~ 144	123 ~ 139	140 ~ 171	169 ~ 200	258 ~ 274	304 ~ 306	304 ~ 330	305 ~ 354	380 ~ 410	399 ~ 440	428 ~ 470
Pin to pin (A)	mm	85 ~ 107	90 ~ 192	170 ~ 200	184 ~ 218	225 ~ 285	285 ~ 310	390 ~ 430	415 ~ 425	425 ~ 470	440 ~ 490	510 ~ 515	545 ~ 590	570 ~ 590
Mountable pin to pin ©	mm	83 ~ 117	89 ~ 217	160 ~ 217	180 ~ 249	215 ~ 320	270 ~ 353	380 ~ 440	405 ~ 507	405 ~ 507	420 ~ 517	488 ~ 603	523 ~ 610	560 ~ 590
Tolerance of safety pinconnection	mm	83 ~ 114	89 ~ 217	160 ~ 217	180 ~ 249	215 ~ 320	270 ~ 353	380 ~ 440	405 ~ 507	405 ~ 507	420 ~ 517	488 ~ 603	523 ~ 610	560 ~ 590
Pin diameter(D)	mm	25	30	35	38 ~ 40	45	45 ~ 60	65 ~ 70	70	70	80	90	90 ~ 100	100 ~ 120
offset height(H1)	mm	147 ~ 161	150 ~ 166	160	160 ~ 175	170 ~ 200	180 ~ 215	230 ~ 260	290	285 ~ 290	270 ~ 300	330 ~ 335	315 ~ 360	439
Operation pressure	bar	30 ~ 210	30 ~ 210	30 ~ 210	30 ~ 210	30 ~ 350	30 ~ 350	30 ~ 350	30 ~ 350	30 ~ 350	30 ~ 350	30 ~ 350	30 ~ 350	30 ~ 350
Oil flow	lpm	10 ~ 20	10 ~ 20	10 ~ 20	10 ~ 20	10 ~ 20	10 ~ 20	10 ~ 20	10 ~ 20	10 ~ 20	10 ~ 20	10 ~ 20	10 ~ 20	10 ~ 20
Applicable excavator	ton	1	2	3	4	5	8	13	18	20	22	30	33	45





EVERDIGM



From construction equipment manufacturing to construction, we realize innovations and Challenges in various business fields.



MARKETING

Room#1203, WoolimLion'sValley2, 2 Gasan digital 1-ro,Geumcheon-gu, Seoul, Korea
TEL **+82-2-801-0800** FAX **+82-2-830-0899**
Email attachment@everdigm.com

HEAD OFFICE & FACTORY

49, Buyeong-gil, Jincheon-eup, Jincheon-gun, Chungcheongbuk-do, Korea
TEL **+82-43-530-3473** FAX **+82-2-830-3368**



www.facebook.com/EverdigmCo



www.youtube.com/user/everdigm01